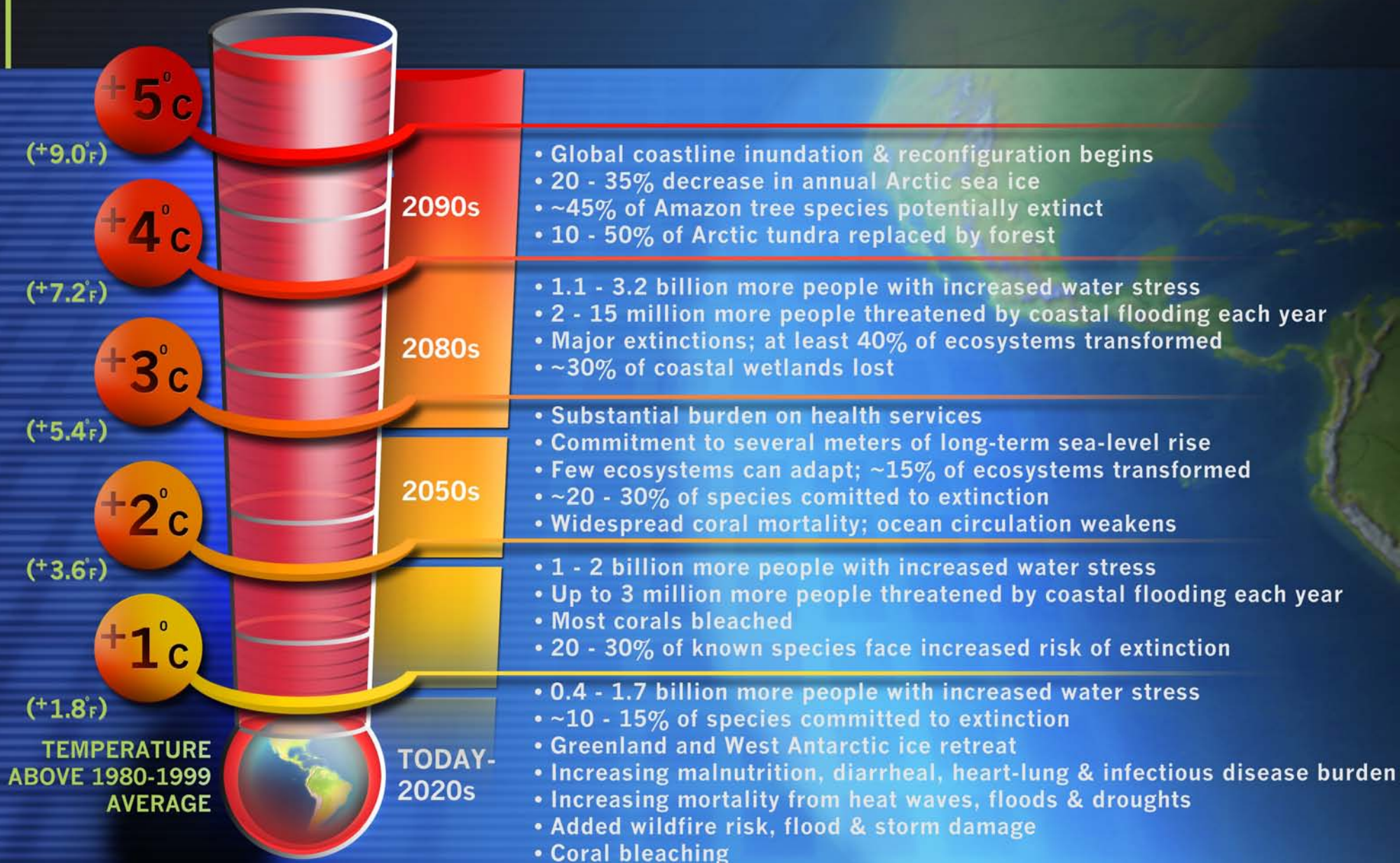


RISING IMPACTS OF GLOBAL WARMING



www.pewtrusts.org



Source: IPCC, 2007. Tables TS.3 and TS.4, and Figures TS.4 and TS.6 in: *Contribution of Working Group II to the Fourth Assessment Report of the Intergovernmental Panel on Climate Change*. Available online at: <http://www.ipcc.ch/ipccreports/ar4-wg2.htm>. Time estimates given are based on a no mitigation, worst-case fossil-fuel intensive growth scenario. Contact: Shannon Heyck-Williams, Officer, Government Operations, or Phyllis Cuttino, Director, U.S. Global Warming Campaign, Pew Environment Group, (202) 887-8800.